

# CHAMBER CONNECTIONS

July 2021 | Local Business Here for You

## ARE YOU A CHAMBER MEMBER YET?

Are you a business or organization that would love to be more involved in the community and reach out to your customers?

You can be featured in our monthly newsletter, our website, and social media accounts. Also, you can receive updates on leadership programs and opportunities.

We are always accepting new members and wish to serve you in the best way possible with fees starting as low as \$10/month.

Talk soon!



### JULY is here!

Welcome to this month's edition of the 'Chamber Connections' newsletter, brought to you by the Kingman Area Chamber of Commerce. As you flip through the pages, you'll find valuable resources – and probably will learn something new – about your community! Keep reading to see what the month of July promotes and brings awareness to.

**National Ice Cream Month** - In the month of June, you can get excited about eating ICE CREAM! There are places around Kingman where you can purchase a delicious treat such as White's Foodliner, Jeri's Kitchen, and Sonic Drive-In.

**Independence Day** - We can't just NOT include the 4th of July, right? Every year, Independence Day is celebrated for the Declaration of Independence declaring independence from the Kingdom of Great Britain. All across the United States, families and friends get together for picnics, barbeques, fireworks, and other fun events. The Kingman Area Chamber of Commerce hosts the annual All-American Family Fest. This year, it will be taking place on Saturday, July 3rd. Keep reading for more details!

**Independent Retailers Month** - July is known for being the month we can celebrate and support local small businesses. This is right up our alley! Independent retailers make up approximately 51% of the US workforce. When you shop local and shop small, you are not only giving back to your community, but you're helping an individual and their family versus a large corporation.

**National Sugar Cookie Day** - If you're a fan of sugar cookies, you're in luck! July 9th is known as National Sugar Cookie Day. In Kingman, you can find sugar cookies at both White's Foodliner and Cleo's Flower Shop. You can also order custom designs for your cookies when you call in to Cleo's Flower Shop.

**National Wine & Cheese Day** - "Wine'd" down your day by indulging in a wine and cheese night. July 25th is known as this day. When you shop at K-Town Wine & Liquor and Kingman Spirits and Wine, they can help provide you with suggestions and what cheeses can best complement their wine selection. Try something new!

**National Blueberry Muffin Day** - On July 11th, be sure to check out a few locations such as White's Foodliner and Sweet T's Bakery and Pie Shop in Kingman and enjoy a blueberry muffin! When you walk in or call to order at Sweet T's, you'll be enjoying a HOMEMADE muffin. How fun is that?!

# Kingman Area Chamber of Commerce

## Board of Directors



**Brandon Ritcha, President**  
Ricke & Ritcha, Attorneys at Law  
Term ends 2021



**Ashley Keimig, President-Elect**  
Kingman Co. Appraisers Office  
Term ends 2022



**Leesa Beam, Treasurer**  
Citizens Bank of Kansas  
Term ends 2022



**Misty Jacobs, Secretary**  
Kingman Co. Public Works  
Term ends 2021



**Mandi Roser**  
Eck Services  
Term ends 2021



**Chris Huhman**  
Edward Jones Investments  
Term ends 2022



**Amy Wallace**  
USD 331 Schools  
Term ends 2023



**Meredith Voran**  
Kingman Drug, Inc  
Term ends 2023



**Becky Pickett**  
USD 331 Schools  
Term ends 2023



**Shelby Snyder, Executive Director**  
2019 – Present  
**I create the stuffs!**

### WHAT IS A CHAMBER BOARD OF DIRECTORS?

According to its bylaws, Kingman Area Chamber of Commerce is organized to advance the general welfare and prosperity of the Kingman area so that its citizens and all areas of its business community shall prosper.

The Chamber board of directors is composed of 9 individuals who have been elected by fellow Chamber members to serve a 3-year term. As a director reaches the end of their term, he/she has the option to run for another term. The board of directors employs 1 individual to serve as the Executive Director. There is no term limit for an executive director as it is a paid position.

# CHAMBER UPDATES



## CHAMBER MEETINGS

The Chamber Board of Directors meets on the first Wednesday of every month at 5:30 pm in the conference room, located at the Kingman Armory. Meetings are open to the public.

If you would like to attend or to be added to the agenda, please contact us at (620) 532-1853 or [thekingmanareachamber@gmail.com](mailto:thekingmanareachamber@gmail.com)

## BULK RATE STAMP FOR MEMBERS

Aside from being featured in our monthly 'Chamber Connections' newsletter, another perk to being a member with the Kingman Area Chamber of Commerce is the ability to use the Chamber's bulk rate mail stamp.

Please contact Shelby Snyder, Executive Director, at 620-532-1853 or [thekingmanareachamber@gmail.com](mailto:thekingmanareachamber@gmail.com) for more info.



## ADVANCED MOBILE OPEN HOUSE AND MEET & GREET

Friday, June 11th, Advanced Mobile Healthcare & Community Clinic in Kingman hosted an Open House. Advanced Mobile and their staff were excited to welcome their newest provider Jessica Holloway, APRN to the community.

Drinks, snacks, and giveaways were all available as the public could meet Holloway and the rest of the staff.

Holloway received her Master of Science in Nursing from Maryville University. She is board certified by the American Nurses Credentialing Center and has a special practice interest in providing rural health care.

Holloway and her husband got married 7 years ago and have 2 adventurous boys together. In her spare time, she enjoys reading and spending time with her family.

**Book your appointment today! Call 620-553-5040**

# SADIE STREET

(FORMERLY MEMORY LANE)

coming soon!

## CITY OF KINGMAN Residential Construction Incentive Program (RCIP) & Special Assessment Rebate Program (SARP)

### NEW PROGRAMS COMING SOON!

The **Residential Construction Incentive Program (RCIP)** and the **Special Assessment Program (SAP)** will encourage residential development in the Prosperity Street Addition (formerly known as Memory Lane). The RCIP program will award lots for residential development and waive fees for

Sewer traps and apply credit towards water taps. The SAP will rebate special assessments on a sliding scale for up to five years. Details are coming soon.

If interested, please contact Kingman County Economic Development at 620-553-4029 or [economicdevelopment@cityofkingman.com](mailto:economicdevelopment@cityofkingman.com)

### NEED GIFT IDEAS? DON'T FEAR! CHAMER BUCKS ARE HERE!

The Kingman Area Chamber of Commerce has an amazing way to gift loved ones or your workplace with Chamber Bucks!

Not only do you get a discount on your purchase or a service, but you are directly helping to support your community and local economy! GREAT JOB!

Ok so you received a Chamber Buck...now what?

Chamber Bucks work similarly to a **GIFT CERTIFICATE**, but you can spend them at more than one location! Chamber Bucks are a form of payment towards your purchase or bill you receive from a Kingman Area Chamber member business or organization that chooses to accept them.

If you have two \$25 Chamber Bucks, you can spend \$25 at two locations OR you can spend \$50 at one location.

Need gift ideas for friends & family?



**GIFT SOMEONE WITH  
CHAMBER BUCKS**

Shop Local.  
Support Local.  
**Think Kingman County First.**



Chamber Bucks can be purchased at the Kingman Area Chamber of Commerce. Chamber Bucks can only be spent at participating Chamber member businesses and organizations.

Check out our website at [www.kingmancc.com](http://www.kingmancc.com) to see an active list of participating businesses and organizations!



### NEED A VENUE?

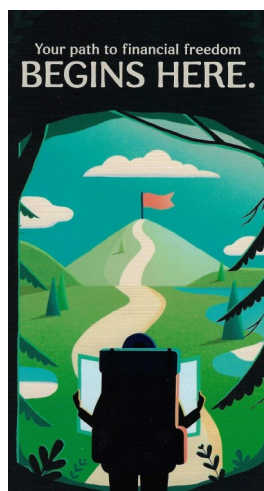
The Kingman Area Chamber of Commerce also helps to run and maintain the Kingman Armory.

This historical site is a fantastic place to host upcoming events and weddings!

You can check out rental pricing and photos on our website at [www.kingmancc.com](http://www.kingmancc.com) and select **Armory Rentals** on the main menu.

Questions? Simply call 620-532-1853 or email the Chamber office at: [thekingmanareachamber@gmail.com](mailto:thekingmanareachamber@gmail.com)





Don't let high interest rates make your journey harder than it has to be. Paying down debt has never been easier.

Wondering how much you can save on interest alone? Below we compare your financial institution's offering to the competing credit card.\*\*

	Your Credit Card	Competing Credit Card
Current Credit Card Balance	\$5,000.00	\$5,000.00
Credit Card's Interest Rate	2.99%	20.99%
Average Monthly Payment (in dollars)	\$50.00	\$50.00
Time period (in months)	6 Months	6 Months
Total Interest Charges with Selected Card	\$73.34	\$534.81

Take advantage of our low **2.99%\*** balance transfer rate today and enjoy a smoother path to your future.

99% Annual Percentage Rate for the first 6 billing cycles on balance transfer, after 6 billing cycles card balance will revert to standard card rate. Editorial limitations, terms and conditions may apply. Availability of offer based on creditworthiness. Please contact your local financial institution representative for specific terms and conditions. Offer expires 6/30/2020.

\*\*This information reflects an industry average of competing credit card offer's standard rates and fees.

## BECOME DEBT FREE

On the left displays how Kanza Bank's credit card compares to the competitors.

Are you been working on becoming debt free or just don't know where to start? Kanza Bank can help!

Stop by their location for more information at 151 N Main in Kingman.



## RESULTS FROM FAÇADE PROGRAM

Does your storefront need a facelift?

It's exciting to see businesses around town getting an update, but not only that, there's an amazing program right now to help with the cost!

Featured on the right is a before and after of the work done at Kingman Chiropractic Center.

Contact Kingman County Economic Development to see if you apply for



Before renovation



After renovation

the Kingman County Façade Program at (620) 553-4029 or [economicdevelopment@cityofkingman.com](mailto:economicdevelopment@cityofkingman.com)



Support your local, small town papers!



## GLUTEN-FREE OPTIONS

Does your body hate GLUTEN?

You're in luck because Houdini's Pizza now has a gluten-free option for you to enjoy! AND...we hear it's pretty tasty!

Stop on by their location at 401 East D in Kingman.

# CHAMBER MEMBER SPOTLIGHT



This chamber member spotlight features Shasta Weve with **Polished Coupe Salon & Brewtique.**

Shasta wears many hats. She helps with the family farm and works as a real estate agent aside from running Polished Coupe.

## **Tell us a bit about Polished Coupe Salon & Brew**

"We sell women's clothing, jewelry, gifts, children's clothes, Brumates, KanKan!, and a full hair salon."

## **Who is your target market?**

"EVERYONE — big, little, short, tall, young or old. If you can smile, we have something for you!"

## **What got you interested in starting your own business?**

"I wanted to be able to set my own hours and enjoy what I do!"

## **Since starting your business, what has been your biggest win?**

"Bringing my daughter in as a cosmetologist." Mady Weve works the hair salon section of Polished Coupe in Kingman. Mady is able to provide you with your perfect color or trim, hair extensions, and even also lash extensions."

## **What has been your biggest challenge thus far?**

"COVID!"



## **What makes you stand out from competitors?**

"Our prices are not inflated as high as other boutiques. We just want to see you smile."

## **What are your personal goals for Polished Coupe Salon & Brewtique?**

"We want to be profitable enough to keep the shop open and serve the community for many years."

## **Favorite quote:**

"If you don't like something, change it!" - Unknown

Polished Coupe Salon & Brewtique is owned and operated by mother-daughter duo Shasta and Mady Weve here in Kingman.

They are located at 301 N Main St. Stop on by their location to see their entire selection and what is available and on trend. To schedule an appointment in the salon, call (620) 955-6006.

Better yet, check them out on their Facebook page @polishedcoupe



*This Chamber Member Spotlight has been brought to you by the Kingman Area Chamber of Commerce.*

*Thank you for supporting your community! We are Kingman proud.*



# All-American

**SAT, JULY 3RD  
2021**

# FAMILY FEST

All events at Riverside Park unless otherwise noted.



All Day  
Concessions in the Park  
Sponsored by Kingman County Humane Society

All Day  
Softball Tournament  
Contact Jake Graber at (620) 532-9197  
or [jake@factory233.com](mailto:jake@factory233.com)

8:30 am  
Pooch Party in the Park  
Sponsored by Kingman County Humane Society

9:00 am  
Family Parade down Main Street  
(line up at 8:45 am at "B" Street Parking Barn)

9:00 am - 4:00 pm  
Kingman Carnival Kettle Corn  
& Food Trucks will open:  
*JD's Bar-B-Q*  
*Crazy G's Shaved Ice*  
*Taqueria Galindo*  
*Ken n Barbiez' Rollin Diner*

9:30 am  
Cornhole Tournament  
Sponsored by Kingman Recreation Commission

9:30 am  
Football Fling  
Sponsored by Citizens Bank of Kansas

9:30 am - 11:30 am  
Hot Shot Competition  
Sponsored by KMS/KHS Girls Basketball

10:00 am  
Splash Dash  
Sponsored by 360 Total Fitness

10:00 am - 12:00 pm  
Kids Fun Zone  
Sponsored by Folks Homecenter & Park Board

10:00 am - 1:00 pm  
Dunk Tank  
Sponsored by Newberry Family Motors

10:30 am - 1:30 pm  
Karaoke by Cameo Entertainment at Gazebo  
Sponsored by Messenger Petroleum & Jim Graber

11:00 am  
Duck Race located at Mill Race  
Sponsored by Kingman Rotary Club

11:00 am - 1:00 pm  
Kingman Fire Dept Water Spray & EMS Exploration

12:00 pm  
Free Watermelon Feed  
Sponsored by Kanza Bank

1:00 - 4:00 pm  
Free Swim at Kingman Pool  
Sponsored by KES PTO

4:00 pm  
Grand Opening --- Kingman Heritage Hall of Honor  
Painting & success stories of 21 Kingman  
celebrities & world-changing leaders.  
Located at Kingman Expo Center.  
Keynote Speaker: Jennifer Baysinger, KS Chamber of Commerce

6:00 pm Doors Open // 7:00 pm Show Starts  
'LIVERPOOL LEGENDS: A Tribute to The Beatles'  
located at & hosted by Kingman Historic Theatre  
*Tickets can be purchased at Theatre Box Office or*  
[www.kingmanhistorictheatre.com](http://www.kingmanhistorictheatre.com)

**ALL WATER & ICE DONATED BY ECK SERVICES**

**FIREWORKS DISPLAY AT 9:45 PM  
SPONSORED BY:**

**CITIZENS BANK OF KANSAS  
MIZE & CO, INC  
H&R BLOCK  
KINGMAN AREA CHAMBER OF COMMERCE**

**CHARLUS & THERESA BISHOP  
KANZA BANK  
NEXTLINK INTERNET  
DIXON'S HARDWARE, LLC**

All-American Family Fest has been brought to you by Kingman Area Chamber of Commerce.  
The practice of social distancing is recommended. Enforcement is not possible, so celebrate at your comfort level.



#### ELECTION NOTICE:

TO ALL RESIDENTS OF ALL INCORPORATED CITIES IN KINGMAN COUNTY BEING:

Cunningham City, Kingman City, Nashville City, Norwich City, Penalosa City,  
Spivey City and Zenda City.

To those persons living in these cities, there will be a General Election for mayors and city councilmen on Tuesday, November 2<sup>nd</sup>, 2021, for persons to be elected to fill such offices. A Primary Election, if needed, for any positions will be held on August 3<sup>rd</sup>, 2021.

The filing deadline for said positions will be at 12:00 NOON on Tuesday, June 1<sup>st</sup>, 2021. The place of filing will be with the County Clerk located in the Kingman County Courthouse. Filing fee for these positions will be \$20.00 per candidate.

Dated this 10<sup>th</sup> day of May, 2021.

Carol D Noblit  
Election Officer

TO ALL RESIDENTS OF USD #331 AND ALL OTHER INTERESTED PERSONS:

According to K.S.A. 25-2108a(a):

There shall be a General Election on Tuesday, November 2<sup>nd</sup>, 2021 for the purpose of electing USD #331 Board Members to the position of #1, #5 & #6. A primary election, if any is needed, for all positions will be held on August 3<sup>rd</sup>, 2021. The filing deadline for these positions will be at 12:00 NOON on June 1<sup>st</sup>, 2021. The place for filing will be in the office of the Kingman County Clerk located in the Kingman County Courthouse, Kingman, Kansas. Filing fee is \$20.00 per candidate.

Dated this 10<sup>th</sup> day of May, 2021.

Carol D Noblit  
Election Officer

TO ALL RESIDENTS OF USD #332 AND ALL OTHER INTERESTED PERSONS:

According to K.S.A. 25-2108a(a):

There shall be a General Election on Tuesday, November 2<sup>nd</sup>, 2021, for the purpose of electing three USD #332 Board Members At-Large positions. A Primary Election, if any is needed for all positions will be held on August 3<sup>rd</sup>, 2021. The filing deadline for these positions will be at 12:00 NOON on June 1<sup>st</sup>, 2021. The place for filing will be in the office of the Kingman County Clerk located in the Kingman County Courthouse, Kingman, KS. Filing fee is \$20.00 per candidate.

Dated this 10<sup>th</sup> day of May, 2021.



KINGMAN  
COUNTY  
Kansas

Carol D Noblit  
Election Officer

## To treat bug bites and stings at home:



Source: Source: American Academy of Dermatology

- **PAINFUL BITES, SUCH AS A BEE STING:**  
An over-the-counter painkiller may help.
- **FOR BITES THAT ITCH:** an over-the-counter anti-itch cream, such as hydrocortisone, or an over-the-counter oral antihistamine may lessen that itch.
- **TO REDUCE SWELLING:** Apply an ice pack.



### PESKY BUG BITES?

Find relief for any bug bite at your local pharmacy.

When you speak with a pharmacist at Kingman Drug, they can point you in the right direction when it comes to insect repellents and anti-itch creams!



### CAR SHOW

**Saturday July 17th 11-2**  
**Wheatlands Healthcare Center**  
**750 W Washington St # 750,**  
**Kingman, KS 67068**

## Prizes, food, and fun

CONTACT CHELSEA AT 316-249-5239 OR  
CFRENCH@RIVERCROSSHOSPICE.COM TO  
REGISTER AT NO CHARGE

Sponsored by Rivercross Hospice

### UPCOMING CAR SHOW

Save the date for Saturday, July 17th!

Rivercross Hospice has partnered with Wheatlands Healthcare Center to put together a car show.

Contact Chelsea with Rivercross Hospice to be entered.

### CHILD TAX CREDIT UPDATE

**Calculate how  
much your  
Child Tax Credit  
could be.**



### H&R BLOCK UPDATE

The IRS will send out advance payments for the Child Tax Credit starting July 15th. Curious how much you could get back? You can use H&R Block's calculator to crunch the numbers: <http://hrblock.io/CTCCalculator>

Birth through Age 5

## FREE DEVELOPMENTAL SCREENING

Kingman Monday, July 26th  
Kingman Elementary School  
Medicine Lodge Tuesday, July 27th  
Central Office (100 East 1st St)  
Harper/Anthony Wednesday, July 28th  
Chaparral Jr./Sr. High School  
Pratt Thursday, July 29th  
ACE Building (Preschool Building)  
St. John (mini) Thursday, August 5th  
St. John Elementary School  
Screenings 9am-3pm Mini Screening 9am-11am

**CALL FOR AN APPOINTMENT**  
**(620) 672-7500 EXT.1203**  
**OR EMAIL: SANDRA.ESPINO@SCKSEC.COM**

# 90%

of a child's Brain Develops  
BEFORE  
the age of 5



Source: Harvard Center for the Developing Child

SPONSORED BY (CC) SOUTH CENTRAL KANSAS SPECIAL EDUCATION COOPERATIVE  
ARROWHEAD WEST, INC. SUNFLOWER EDUCATION CENTER, PARENTS AS TEACHER  
HORIZONS MENTAL HEALTH CENTER & SUNFLOWER  
MULTIPLE AREA HEALTH DEPT. MULTIPLE AREA SCHOOL DISTRICTS





# Simply Produce

Kingman County



## Get Your Simply Produce Basket!

- Order a Produce Basket for only 15 dollars (plus tax) at White's Foodliner
- Pick up your Basket at Kingman Methodist Church, 133 E. D Ave after orders close.
- For more information, contact Andrea Wood @ Kingman County Extension, 125 N. Spruce, 620-532-5131 or by email, awood@ksu.edu

## Ordering/Distribution Dates

Watch local media or check with the store for additional dates!

- |   |   |
|---|---|
| <input type="checkbox"/> Place Orders: 05/7 (7:00 am) - 05/12 (Noon)  | <input type="checkbox"/> Pick up Basket: 5/14 (Noon-12:45 pm) |
| <input type="checkbox"/> Place Orders: 06/04 (7:00 am) - 06/09 (Noon) | <input type="checkbox"/> Pick up Basket: 6/11 (Noon-12:45 pm) |
| <input type="checkbox"/> Place Orders: 07/02 (7:00 am) - 07/07 (Noon) | <input type="checkbox"/> Pick up Basket: 7/09 (Noon-12:45 pm) |
| <input type="checkbox"/> Place Orders: 08/06 (7:00 am) - 08/11 (Noon) | <input type="checkbox"/> Pick up Basket: 8/13 (Noon-12:45 pm) |

Simply Produce

Produce basket distribution utilizing local retail venues is designed to increase access to healthy fruits and vegetables for consumers, while stimulating positive economic impact and building regional food system sustainability. Material funded by USDA SNAP and Kansas SNAP-Ed through K-State Research and Extension and Kansas Department of Children and Families (DCF). USDA is an equal opportunity provider.



## Commercial, Agricultural and Residential Services

Elastomeric Roof Coatings  
Metal Roofs  
Built-Up Roofs  
TPO  
Shingles  
Industrial & Agricultural Painting  
Media Blasting  
High Heat Power Washing  
In shop and Mobile Equipment  
Fully Insured & Licensed

602 N. DeFonte St.  
Kingman, KS 67068

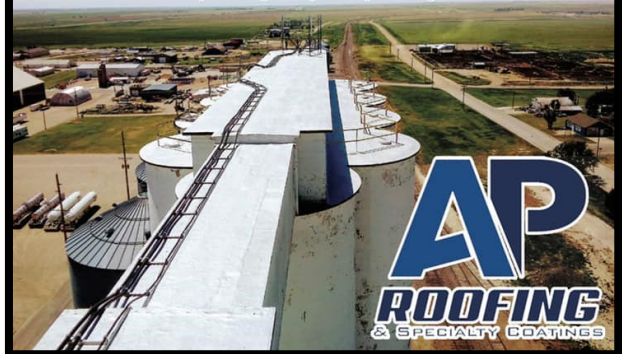
Office:  
620-532-1076

Fax:  
620-955-6114

aparsons@aproofing.org

## FREE ESTIMATES

[www.aproofingandspecialtycoatings.com](http://www.aproofingandspecialtycoatings.com)



## SIMPLY PRODUCE PROGRAM

Ordering will be coming up soon again!

Orders can be placed from July 2nd to the 7th. These orders can then be picked up on July 9th. Questions? Please contact Andrea Wood at the Kingman County Extension Office at (620) 532-5131.

## FREE ROOF ESTIMATES

Now is the perfect time to have AP Roofing & Specialty Coatings come check out your roof and give you your free estimate for replacements or repairs.

Call them today at 620-532-1076.



## MENTAL HEALTH IN AMERICA

1 in 5 people will experience a [#mentalhealth](#) condition in their lifetime, but everyone has mental health.

As [#MentalHealthMonth](#) comes to a close, remember to keep talking. Normalize mental health care. Fight the stigma.

If you or a loved one needs support and would like to seek help, reach out to Horizons Mental Health Center in Kingman.

To schedule an appointment with a licensed therapist, call (620) 532-3895.



### KHC GOLF TOURNAMENT

The 24th Annual Kingman Healthcare Center (formerly known as Kingman Community Hospital) Foundation Charity Golf Tournament is being held to benefit the health and wellness in Kingman County and the surrounding areas. The Foundation raises funds to

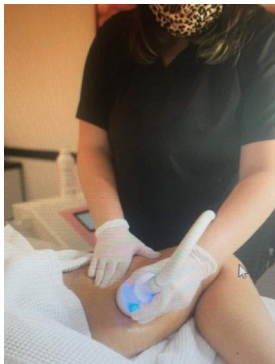
contribute to enhancing technology, supporting our local EMS, early childhood education through the Imagination Library Program, funding the Medical Academy for high school students, purchasing needed medical equipment for KHC, and much more.

### NEW BEAUTY SERVICES

Have you tried this yet?!

Get ready for summer with CRYOSKIN. Cryoskin is a new treatment available at Xperience Salon & Massage to tone and slim any problem areas.

Call to book now at (620) 532-3279!



### INSURANCE OPTIONS

Strong's Insurance is an independent agency that works with numerous insurance carriers which allows them to access a very wide variety of options at competitive prices.

Their team focuses on the needs of their clients, not the insurance companies, concentrating on analyzing and

minimizing risks and exposures, offering a variety of resources, aids, and expertise to protect their clients with the best coverage and practices for the maximum value per premium dollar.

Need to look into plans? Call their location in Kingman at (620) 532-5831.

### RIVERCROSS HOSPICE

Rivercross Hospice has numerous locations in Kansas and Oklahoma. They are dedicated to providing and promoting the best quality of care for patients and families facing end-of-life issues.

They also offer support and grieving services to families of those loved ones affected. Their staff and team is able to cater to anyone suffering from a life-limited, terminal disease.



**KINGMAN COUNTY HISTORICAL SOCIETY'S  
4<sup>th</sup> CAR, TRUCK & MOTORCYCLE SHOW**



**Saturday- September 25, 2021**

**8:30am – 2:00pm**

**Music – Prizes – Food**

**REGISTRATION IS FROM 8:30am – Noon**

**Registration fee is \$15 per vehicle**

**People's Choice Voting 9:00am – 12:00pm**

**Awards Show at 1:15pm**

**50/50 Money Pot 8:30am – 12:00pm (18 & OVER)**

**50/50 Money Pot drawing at 1:00pm**

**If You Have Questions Call 620-314-5006 or 620-532-5274**

**Tour our museum & discover our past!**

**With your entry fee, you'll be helping to preserve  
Kingman County's historical 1888 City Bldg. & Fire Station**



**NEED TO REVIEW OR CHANGE YOUR POLICY?**

Insurance isn't always a "one-size-fits-all."

Meet with an agent to get a customized quote and make sure you only have the coverage you need — and nothing you don't.

Reach out to Shelter Insurance at their location here in Kingman. Agent Chad Obsorn can get you fixed up at (620) 532-3100.



**Great Lakes  
Polymer Technologies**

**FIBERS AND COMMERCIAL PRODUCTS**

Great Lakes Polymer Technologies offers their clients a complete line of long-lasting specialty polypropylene twines and fillers engineered for strength to best suit your individual needs.

Great Lakes is located in Kingman. To place an order or inquire, you can reach their office at (620) 532-4034.



**HVAC SERVICES AVAILABLE AT DIXON'S**

DID YOU KNOW that Dixon's Hardware in Kingman is so much more than a retail store?

When you experience an issue with your heating and cooling system, their staff can swing by and take a look!

To schedule a repair, please call (620) 532-2631.

***True Value.***



**Sweet T's**  
Bakery and Pie Shop

**Daily Sweets**  
Pies - Chocolate Cream, Coconut Cream  
Cookies - Oatmeal Chocolate Chip, and others  
Cream Puffs  
Cinnamon Rolls  
Muffins - Blueberry, Banana, and Chocolate

<p><b>Tuesday</b> Banana Bread White Bread Eclairs Peach Pie Fresh Fruit Tart</p> <p><b>Wednesday</b> Whole Wheat Bread Honey Wheat Bread Croissants Cupcakes Peach Muffins Cherry Pie</p> <p><b>Thursday</b> Hearth Bread Cinnamon Muffins Danish Eclairs Apple Pie Sausage Cheese Biscuit</p>	<p><b>Friday</b> Croissants White Bread Cupcakes Eclairs Strawberry Muffins Sausage Cheese Biscuit</p> <p><b>Saturday</b> Banana Bread Cupcakes Coconut Macaroons Fresh Fruit Tart</p>	<p><b>Lunch Menu</b> Tuesday-Friday 11:00-1:00</p> <p><u>Sandwiches</u> Turkey and Cheese Ham and Cheese</p> <p><u>Bread Choice</u> Wheat White Croissant (Wed &amp; Fri)</p> <p><u>Sides</u> Chips Potato Salad</p>
---	--	--

**Sweet T's**  
113 E Ave A  
Kingman, KS  
620-532-1477  
Tuesday-Friday 8-4  
Saturday 8-12  
Closed Sunday & Monday  
**WE TAKE ORDERS**




## HAVE A HEALTHY SMILE!

Are you due for your next teeth cleaning? It's recommended to have your teeth cleaned every 6 months to remove plaque and tarter buildup. The healthier smile you have, the healthier your body will be!

Need to schedule an appointment? Call the office of Dean Langley, DDS in Kingman at 620-532-2831!

## BLASTS AT SONIC

NEW Cheesecake Blasts have arrived at SONIC! Creamy cheesecake is swirled with real ice cream and buttery graham cracker pieces, then topped with real cheesecake and even more graham cracker pieces.

Enjoy an authentic cheesecake experience in a cup with the Cheesecake Blast or the Strawberry Cheesecake Blast mixed with real strawberries!



## WEIGHT LOSS SUPPLEMENTS

Have you been looking for a supplement to try to boost your weight loss journey? Xyngular supplements has a fat burning system that will help to get rid of belly fat. The photo on the left shows an individual's results after

taking their supplements for 8 days and lost 5 pounds.

If you have questions about what systems and supplements are right for you, contact Mindy Neville with Xyngular at (620) 532-6707.

## CNG STATION IN KINGMAN

Does your vehicle operate using CNG (compressed natural gas)? You no longer have to travel out of town to fuel up!

Look no further than Mid-Kansas CNG! Their station is located at 636 N Thompson right here in Kingman.





### ANOTHER LISTING SOLD!

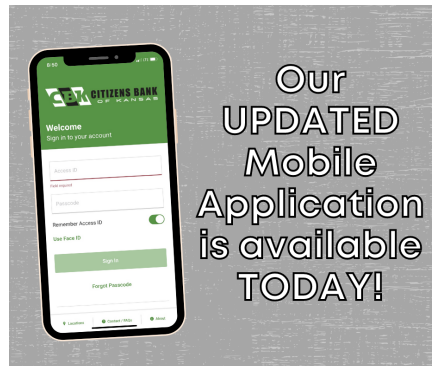
Have you been looking into purchasing a new home or even putting your property on the market? Look no further than the wonderful staff at Floyd Auction & Real Estate in Kingman to help!

To see what properties are available in your area, you can always call their office at (620) 532-1887, visit their Facebook page, or check out listings on their website at: [www.floydsells.com](http://www.floydsells.com)



# 10% Off Wine

Every Monday



### AWARD RECIPIENT

Mark Chesney, CEO/General Manager at Kansas Power Pool, was proud to receive the APPA's James D. Donovan Individual Achievement Award. This award recognizes people who have made substantial contributions to the electric utility industry, with a special commitment to public power. Congratulations!



### WANNA PLAY SOME PICKLEBALL?

Looking for something to do on Tuesday nights? Why not play PICKLEBALL?!

Every Tuesday evening, you can come down to the Kingman Armory and play pickleball for only \$2 per person. The Kingman Armory is located at 111 S Main St in Kingman.

For more information, contact Edwina Whitmer at (620) 243-6811.



### SUMMER ESSENTIALS

Summer has officially started! Did you know that Kingman Drug has got you covered?

Their retail selection features everything you need to make sure you have a fun and safe summer!



# JOB OPPORTUNITIES



## CLEO'S IS HIRING

Open Full Time  
Position  
includes:

Inside Sales Representative  
Hours: Monday - Friday from 9 am  
to 5 pm & Saturdays 9 am to noon

Apply by emailing your resume to:  
cleosfloral@yahoo.com or stop by  
one of their two locations and pick  
up an application.

229 N Main in Kingman or 221 N  
Main in Cheney.



## VOLUNTEER NEEDED

Youth Core Ministries is looking for  
a professional volunteer to help  
run their community faith based  
mentoring program.

It is 5-10 hours per week. Some  
weeks could be more or less.  
Possibility for pay.

Interested? Please contact  
Jennifer Albright at 620-960-0524  
or youthcorementor-  
ing@gmail.com

Kingman Healthcare Center is looking for a...

**PATIENT  
SERVICES  
REPRESENTATIVE**

Tuesdays - Saturdays  
3:30pm-12:00am

- ✓ Are you compassionate and friendly?
- ✓ Can you work in a fast-paced environment?
- ✓ Do you want to be part of a team that makes a difference in the lives of others?

✓ If you answered YES, apply today at  
kingmanhc.com  
and click on the Careers tab. **KINGMAN  
HEALTHCARE CENTER**

## Wheatlands Health Care Center

### FULL TIME NURSE WANTED

Wheatlands Health Care Center  
in Kingman is looking to hire a Full  
Time Registered Nurse for their day  
shift. They offer competitive pay  
and great benefits.

Call Melissa at (620) 532-5801 with  
any questions.



### TRIAL COURT CLERK NEEDED

Deadline to apply is July 2nd!

Applications for a Full Time Trial  
Court Clerk II are now being ac-  
cepted in the office of Clerk of the  
District Court, Kingman County, KS.  
Must have High School Diploma and  
one year of clerical experience.  
Office setting computer experience  
required (Windows 10 and Microsoft  
Office). Must be able to work well  
with public. Attention to detail,  
promptness, and regular attend-  
ance is essential. Starting salary is  
\$14.92/hr.

Applications must be obtained at  
the Clerk of the District Court Office  
at the Kingman County Courthouse  
at 130 N Spruce, 3rd Floor, in King-  
man. You can also go online at:  
www.kscourts.org



### FULL-TIME & PART-TIME

White's Foodliner in Kingman is  
hiring for multiple openings,  
including full-time and part-  
time hours. Apply in person.

Currently available are  
openings for cashiers,  
stockers, the bakery/deli dept,  
and the produce dept.  
Job includes some weekends  
and some evenings.

Applicants must enjoy working  
with people and be self-  
motivated.

**Jerri's  
Kitchen**

**Job Vacancy**  
We Are Hiring

Requirements	Open Position
Starting pay will be up to \$12.00 an hour based on experience and qualifications. Please apply in person.	• Cook

(620) 532-5361 312 N Main St Kingman, KS 67068

**Post your job  
ad here!**





Would you like to be  
featured in KACC's  
Chamber Connections  
monthly newsletter?

Contact us today!

Contact Us  
Kingman Area Chamber of Commerce  
620-532-1853  
thekingmanareachamber@gmail.com  
www.kingmancc.com



## KINGMAN AREA CHAMBER OF COMMERCE

PO Box 132  
Kingman, KS 67068

**KINGMAN**  
*Area Chamber of Commerce*